

---

# DWM COPELAND

---

## Replacement Guidelines for DWM Compressors

D9R\* with D2S\* & D3S\*



**EMERSON**<sup>™</sup>  
Climate Technologies

<b>1</b>	<b>Introduction .....</b>	<b>1</b>
<b>2</b>	<b>Nomenclature .....</b>	<b>1</b>
<b>3</b>	<b>Application envelopes .....</b>	<b>2</b>
<b>4</b>	<b>Cross reference tables.....</b>	<b>2</b>
<b>5</b>	<b>Motor version .....</b>	<b>3</b>
<b>6</b>	<b>Drawings.....</b>	<b>4</b>
6.1	D9RA 500, D9RC 750, D9RS 1000 .....	4
6.2	D9RA 750, D9RC 1000, D9RS 1500 .....	4
6.3	D2SK 65X .....	5
6.4	D3SC 750 .....	5
6.5	D3SA 750, D3SC 1000, D3SS 1000 .....	5
6.6	D3SS 1500.....	6
<b>7</b>	<b>Data sheets.....</b>	<b>7</b>
7.1	D9RA 750 vs D3SA 750 .....	7
7.2	D9RC 1000 vs D3SC 1000 .....	8
7.3	D9RS 1500 vs D3SS 1500 .....	9



## 1 Introduction

Emerson Climate Technologies has successfully introduced many new semi-hermetic compressors in the market over the past years - in particular in the medium size range from 5 to 15 hp with the model families D2S and D3S - a result of continuous engineering effort leading to improved compressors for refrigeration applications. D2S and D3S DWM Copeland™ compressors are available for low, medium and high temperature applications.

The new line of compressors D2S, D3S was developed to give better performances than the former models and to provide larger application envelopes.

Completion of the D3S product familie puts Emerson Climate Technologies in a position to eliminate some of its older compressor models, making it easier for customers to manage stock and save costs. Benefits of the D3S family include the universal compressor models for medium and low temperature applications.

### Transition of semi-hermetic models from R to S product line

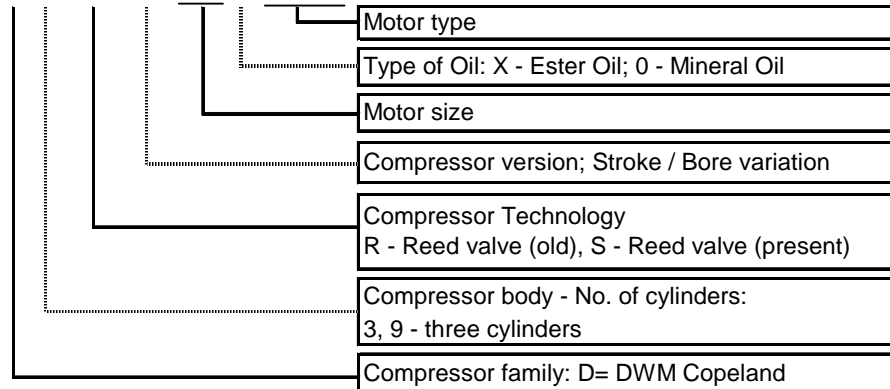
The table below lists existing products and their recommended replacements:

Old	Replacement
D9RA 500L AWM/D	D2SK 65X EWL/D
D9RA 750 AWM/D	D3SA 750 AWM/D
D9RC 750 AWM/D	D3SC 750 AWM/D
D9RC 750L AWM/D	D3SC 75X AWM/D
D9RC 1000 AWM/D	D3SC 1000 AWM/D
D9RS 1000 AWM/D	D3SS 1000 AWM/D
D9RS 1000L AWM/D	D3SS 100X AWM/D
D9RS 1500 AWD	D3SS 1500 AWM/D

Other replacements indicated must be considered as general recommendations. They may differ from the product which they are replacing in performance and mechanical details.

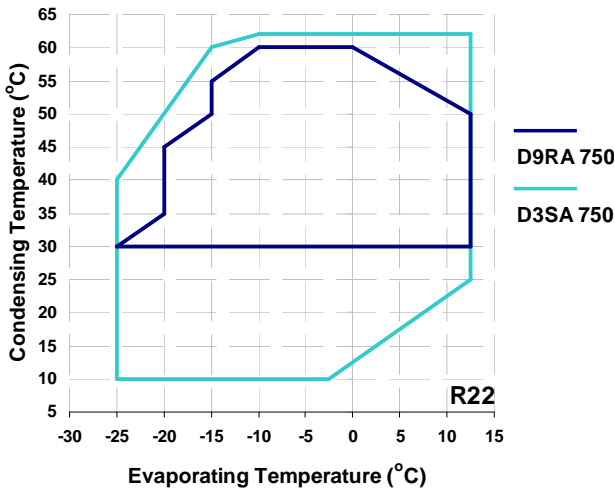
## 2 Nomenclature

**D 9 R A 750 AWM**

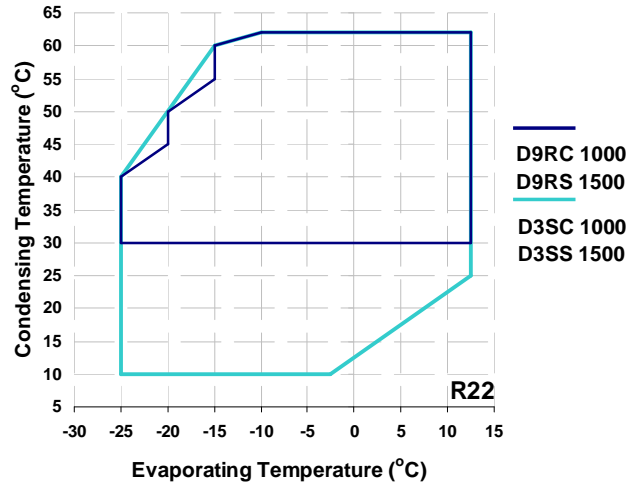


## 3 Application envelopes

D9RA 750 vs. D3SA 750



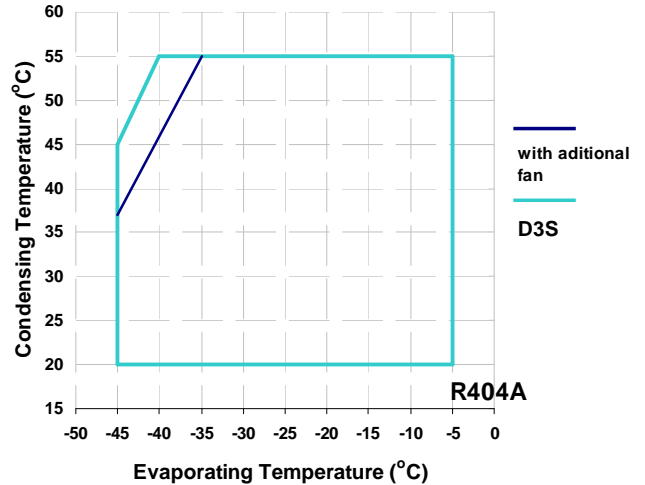
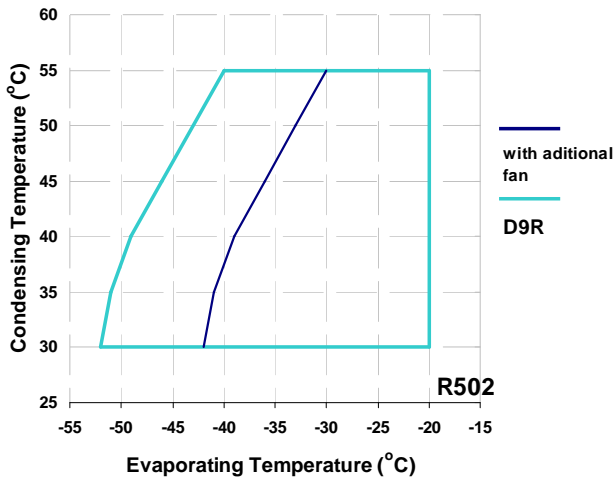
D9RC 1000 vs. D3SC 1000  
D9RS 1500 vs. D3SS 1500



D9RC 750L, D9RS 1000L

vs.

D3SC 75X, D3SS 100X



## 4 Cross reference tables

	D9RA 500L	D2SK-65X
R502 / R404A	-45°C ... -20°C	-45°C ... -5°C
Swept volume m3/h	32.1	Same
Mountings	381 X 305	295 X 279
Length	690	560
Width	335	330
Height	480	395
Disch. Valve Position H/L		Same
Suction Valve Ø	1 3/8"	1 1/8"
Vanne Ref Position H/L		+10 / +50
Disch. Valve Ø	7/8"	7/8"
R502 / R404A	-35°C/40°C	
Capacity [kW]	4.5	4.86
Power Input [kW]	3.9	3.98
COP	1.15	1.22
Current [A]	7.25	8.7
Mass Flow [g/s]		36.72

	D9RA 750	D3SA 750/X
R22	-20°C ... 12.5°C	-25°C ... 12.5°C
Swept volume m3/h	32.1	Same
Mountings	381 X 305	Same
Length	730	655
Width	335	370
Height	480	Same
Disch. Valve Position H/L		Same
Suction Valve Ø	1 3/8"	Same
Vanne Ref Position H/L		+10 / +50
Disch. Valve Ø	1 1/8"	1 1/8"
R22	-10°C/45°C	
Capacity [kW]	14.46	14.36
Power Input [kW]	6.06	6.42
COP	2.38	2.24
Current [A]	11.46	12.5
Mass Flow [g/s]	87	86.42

	D9RC 750L	D3SC 750/X
R502 / R404A	-45°C ... -20°C	-45°C ... -5°C
Swept volume m3/h	37.9	Same
Mountings	381 X 305	Same
Length	690	655
Width	335	370
Height	480	Same
Disch. Valve Position H/L		Same
Suction Valve Ø	1 3/8"	Same
Disch. Valve Position H/L		+10 / +50
Disch. Valve Ø	1 1/8"	Same

	-35°C/40°C	
R502 / R404A		
Capacity [kW]	5.35	5.5
Power Input [kW]	4.6	4.32
COP	1.16	1.27
Current [A]	9.45	9.99
Mass Flow [g/s]		41.55

	+5°C/40°C	
R12/R134a		
Capacity [kW]	20.8	28.55
Power Input [kW]	7.41	8.3
COP	2.81	3.44
Current [A]	19.6	15.65
Mass Flow [g/s]		185.88

	D9RS 1000L	D3SS 1000/X
R502 / R404A	-45 ... -20°C	-45°C ... -5°C
Swept volume m3/h	49.9	Same
Mountings	381 X 305	Same
Length	690	680
Width	335	370
Height	480	Same
Suction Valve Position		Same
Suction Valve Ø	1 3/8"	Same
Disch. Valve Position H/L		+10 / +50
Disch. Valve Ø	1 1/8"	Same

	-35°C/40°C	
R502 / R404A		
Capacity [kW]	7	8.15
Power Input [kW]	5.75	6.17
COP	1.22	1.32
Current [A]	11.8	13.16
Mass Flow [g/s]		61.53

	+5°C/40°C	
R12/R134a		
Capacity [kW]	27.34	28.55
Power Input [kW]	7.41	8.3
COP	3.69	3.44
Current [A]	19.6	15.65
Mass Flow [g/s]		185.88

	D9RC 1000	D3SC 1000/X
R502 / R404A	-20°C ... 12.5°C	-25°C ... 12.5°C
Swept volume m3/h	37.9	Same
Mountings	381 X 305	Same
Length	690	655
Width	335	370
Height	480	Same
Disch. Valve Position H/L		Same
Suction Valve Ø	1 3/8"	Same
Disch. Valve Position H/L		+10 / +50
Disch. Valve Ø	1 1/8"	Same

	-25°C/40°C	
R502 / R404A		
Capacity [kW]	8.86	10.51
Power Input [kW]	5.8	6.09
COP	1.53	1.72
Current [A]	25.1	12.2
Mass Flow [g/s]		80.16

	-10°C/45°C	
R22		
Capacity [kW]	16.55	17.35
Power Input [kW]	7.13	7.83
COP	2.32	2.22
Current [A]	13.63	14.38
Mass Flow [g/s]	99.59	104.39

	D9RS 1500	D3SS 1500/X
R502 / R404A	-20°C ... 12.5°C	-25°C ... 12.5°C
Swept volume m3/h	49.9	Same
Mountings	381 X 305	Same
Length	730	680
Width	335	370
Height	480	Same
Suction Valve Position		Same
Suction Valve Ø	1 5/8"	Same
Disch. Valve Position H/L		+10 / +50
Disch. Valve Ø	1 1/8"	Same

	-25°C/40°C	
R502 / R404A		
Capacity [kW]	12.37	14.67
Power Input [kW]	7.23	8.73
COP	1.71	1.68
Current [A]	31.4	16.55
Mass Flow [g/s]		111.88

	-10°C/45°C	
R22		
Capacity [kW]	22.32	23.96
Power Input [kW]	9.39	10.82
COP	2.38	2.21
Current [A]	18.3	19.64
Mass Flow [g/s]	134.28	144.15

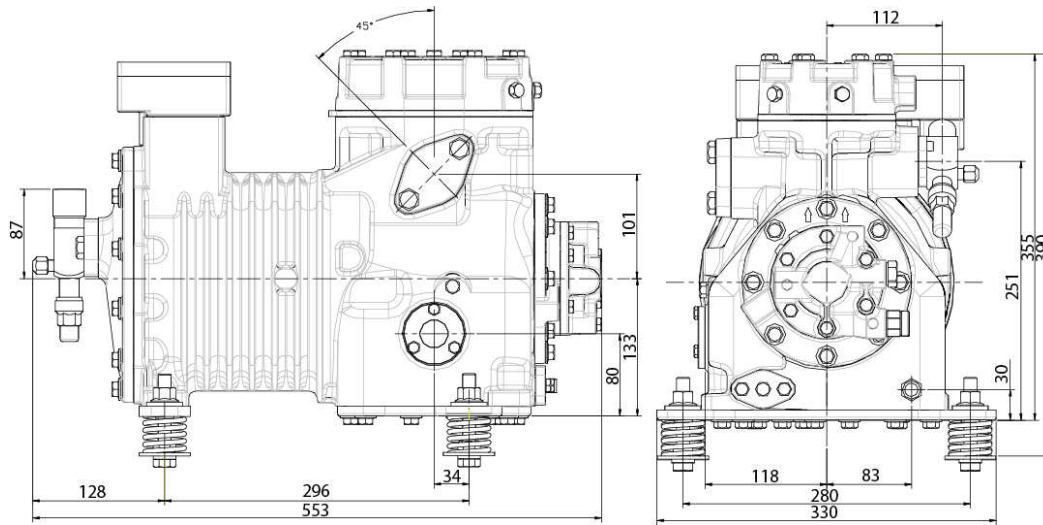
## 5 Motor version

All DWM Copeland™ three-phase compressors can be started Direct-On-Line (DOL). The position of bridges for Direct-On-Line start depending on type of motor and/or mains voltage are shown in the wiring diagrams.

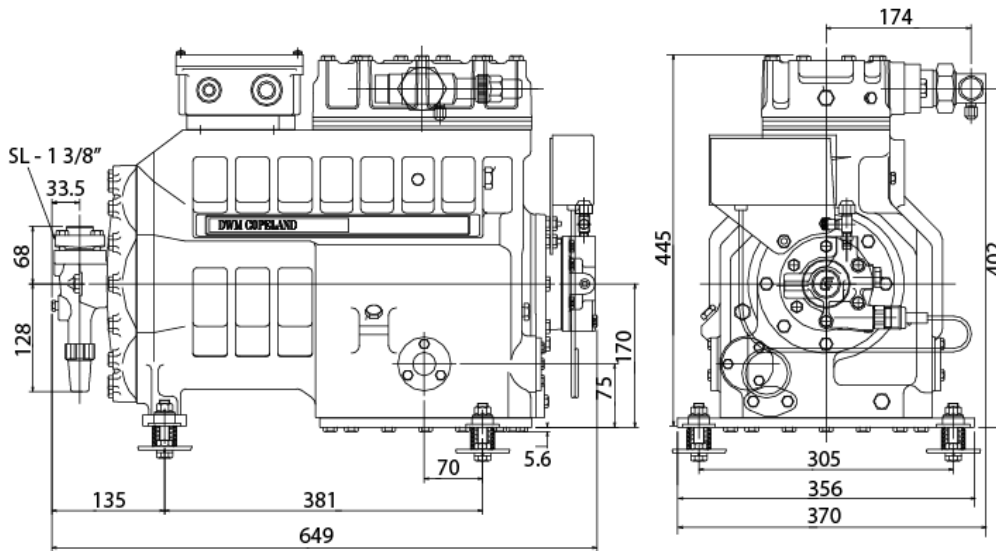
Each compressor terminal box contains wiring diagrams. Always ensure the supply voltage, the phases and frequency match the nameplate prior to connecting the compressor to the system power supply.



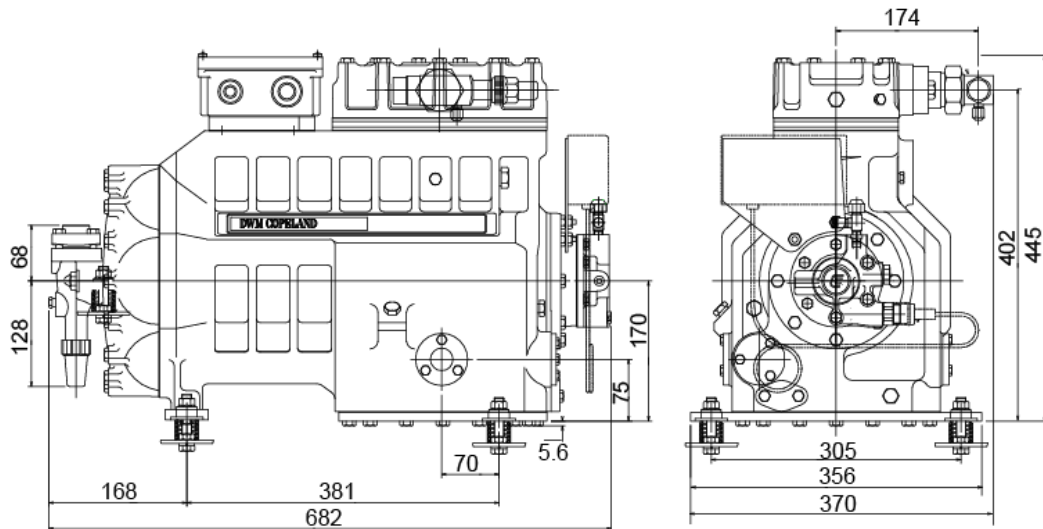
## 6.3 D2SK 65X



## 6.4 D3SC 750



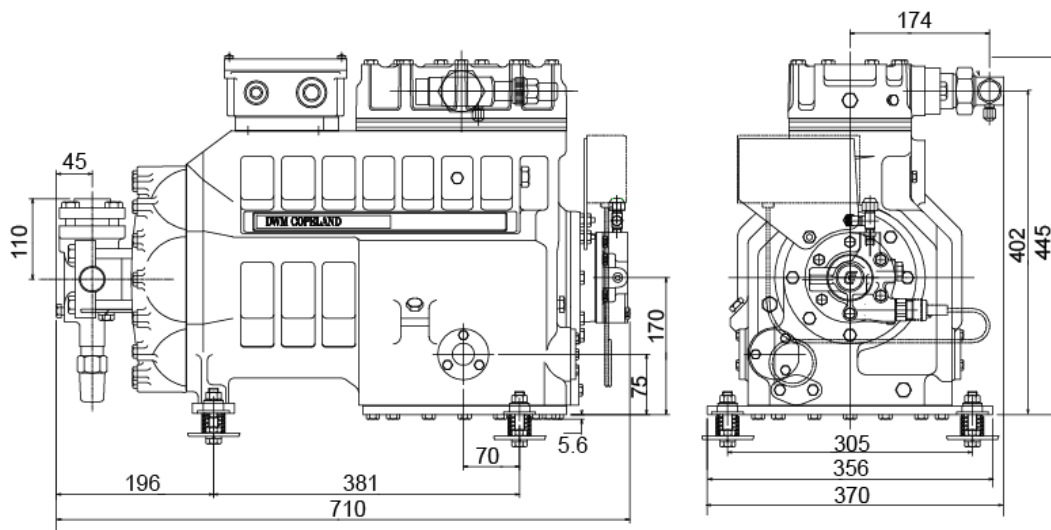
## 6.5 D3SA 750, D3SC 1000, D3SS 1000





# DWM COPELAND

## 6.6 D3SS 1500



## 7 Data sheets

### 7.1 D9RA 750 vs D3SA 750

Power Supply 380/420V - 3~ - 50Hz

Suction Superheat 10.0K

Liquid subcooling 0.0K

#### R22 - D9RA 750

	Cond. Temp.	Evaporating temperature									
		-25	-20	-15	-10	-5	0	5	7	10	12.5
Capacity kW	30	8.27	10.88	13.92	17.43	21.47	26.1	31.38	33.7	37.4	40.7
	35		10	12.94	16.35	20.26	24.75	29.88	32.12	35.7	38.9
	40		9.07	11.92	15.22	19.02	23.36	28.32	30.49	34	37.1
	45		8.1	10.86	14.05	17.72	21.92	26.71	28.81	32.2	35.2
	50			9.76	12.83	16.37	20.42	25.05	27.07	30.3	33.2
	55			8.61	11.57	14.97	18.87	23.32	25.27		
	60				10.26	13.53	17.27				

	Cond. Temp.	Evaporating temperature									
		-25	-20	-15	-10	-5	0	5	7	10	12.5
Power Input kW	30	3.75	4.2	4.61	4.96	5.24	5.43	5.52	5.52	5.48	5.41
	35		4.39	4.88	5.31	5.68	5.97	6.16	6.21	6.24	6.24
	40		4.53	5.11	5.63	6.09	6.48	6.78	6.87	6.98	7.03
	45		4.63	5.29	5.91	6.47	6.96	7.37	7.51	7.68	7.79
	50			5.42	6.14	6.8	7.4	7.92	8.1	8.35	8.52
	55			5.5	6.32	7.09	7.79	8.43	8.66		
	60				6.43	7.31	8.13				

#### R22 - D3SA 750

	Cond. Temp.	Evaporating temperature									
		-25	-20	-15	-10	-5	0	5	7	10	12.5
Capacity kW	10	11.29	14.5	18.33	22.82	28.04					
	15	10.44	13.51	17.17	21.48	26.5	32.28				
	20	9.61	12.54	16.03	20.16	24.96	30.51	36.87	39.64		
	25	8.8	11.59	14.92	18.86	23.45	28.77	34.86	37.53	41.8	45.6
	30	8.03	10.67	13.84	17.58	21.96	27.04	32.88	35.44	39.5	43.2
	35	7.3	9.79	12.78	16.33	20.5	25.34	30.91	33.36	37.3	40.8
	40	6.6	8.94	11.76	15.12	19.06	23.66	28.98	31.31	35.1	38.4
	45		8.14	10.78	13.94	17.67	22.02	27.07	29.3	32.9	36.1
	50		7.38	9.85	12.8	16.31	20.42	25.2	27.31	30.7	33.8
	55			8.96	11.71	14.99	18.86	23.37	25.36	28.6	31.5
	60			8.12	10.67	13.72	17.34	21.58	23.46	26.5	29.2
62				10.27	13.23	16.75	20.87	22.71	25.7	28.3	

	Cond. Temp.	Evaporating temperature									
		-25	-20	-15	-10	-5	0	5	7	10	12.5
Power Input kW	10	3.74	3.9	3.95	3.9	3.72					
	15	3.94	4.16	4.3	4.35	4.27	4.06				
	20	4.11	4.4	4.62	4.76	4.79	4.69	4.46	4.32		
	25	4.25	4.61	4.91	5.14	5.27	5.29	5.19	5.1	4.93	4.75
	30	4.37	4.79	5.17	5.49	5.73	5.86	5.88	5.86	5.77	5.66
	35	4.46	4.96	5.42	5.82	6.16	6.41	6.56	6.58	6.58	6.54
	40	4.54	5.1	5.64	6.13	6.57	6.93	7.2	7.28	7.36	7.4
	45		5.22	5.84	6.42	6.96	7.44	7.83	7.96	8.13	8.23
	50		5.34	6.03	6.7	7.34	7.92	8.44	8.62	8.87	9.05
	55			6.2	6.96	7.7	8.39	9.03	9.27	9.6	9.84
	60			6.37	7.21	8.05	8.85	9.61	9.9	10.3	10.6
62				7.31	8.18	9.03	9.84	10.15	10.6	10.9	

## 7.2 D9RC 1000 vs D3SC 1000

### R22 - D9RC1000

	Cond. Temp.	Evaporating temperature									
		-25	-20	-15	-10	-5	0	5	7	10	12.5
Capacity kW	30	9.16	12.43		20.58	25.58	31.31	37.84	40.7	45.3	49.3
	35	8.12	11.24	14.85	19.02	23.81	29.28	35.52	38.25	42.6	46.5
	40	7.13	10.09	13.53	17.49	22.05	27.27	33.21	35.81	40	43.7
	45		8.99	12.25	16	20.33	25.27	30.92	33.39	37.3	40.9
	50		7.97	11.03	14.57	18.65	23.32	28.66	31	34.7	38.1
	55			9.89	13.21	17.04	21.43	26.45	28.65	32.2	35.3
	60			8.85	11.94	15.5	19.61	24.3	26.36	29.7	32.6
	62			8.85	11.46	14.92	18.9	23.46	25.46	28.7	31.5

	Cond. Temp.	Evaporating temperature									
		-25	-20	-15	-10	-5	0	5	7	10	12.5
Power Input kW	30	-21.39	-20.87		-20.1	-19.87	-19.78	-19.84	-19.91	-20.1	-20.3
	35	-21.33	-20.74	-20.21	-19.77	-19.44	-19.23	-19.16	-19.18	-19.3	-19.4
	40	-21.31	-20.63	-20.02	-19.49	-19.05	-18.73	-18.54	-18.5	-18.5	-18.6
	45		-20.56	-19.86	-19.24	-18.71	-18.28	-17.97	-17.89	-17.8	-17.8
	50		-20.5	-19.73	-19.03	-18.4	-17.87	-17.45	-17.32	-17.2	-17.1
	55			-19.62	-18.84	-18.13	-17.51	-16.98	-16.8	-16.6	-16.4
	60			-19.51	-18.67	-17.88	-17.17	-16.55	-16.33	-16	-15.8
	62				-18.6	-17.78	-17.04	-16.38	-16.15	-15.8	-15.6

### R22 - D3SC 1000

	Cond. Temp.	Evaporating temperature									
		-25	-20	-15	-10	-5	0	5	7	10	12.5
Capacity kW	10	13.61	17.41	21.96	27.34	33.61					
	15	12.63	16.24	20.57	25.69	31.68	38.61				
	20	11.69	15.11	19.22	24.09	29.79	36.41	44.01	47.34		
	25	10.81	14.03	17.92	22.54	27.96	34.26	41.51	44.7	49.8	54.3
	30	9.97	13.01	16.67	21.04	26.18	32.17	39.08	42.12	47	51.3
	35	9.18	12.03	15.48	19.6	24.46	30.14	36.71	39.6	44.2	48.4
	40	8.45	11.12	14.35	18.22	22.8	28.17	34.39	37.14	41.6	45.5
	45		10.25	13.27	16.89	21.2	26.25	32.14	34.74	38.9	42.7
	50		9.45	12.25	15.63	19.66	24.41	29.95	32.41	36.4	39.9
	55			11.29	14.43	18.18	22.62	27.83	30.14	33.9	37.2
	60			10.4	13.29	16.76	20.9	25.77	27.94	31.4	34.6
	62				12.85	16.22	20.23	24.97	27.08	30.5	33.6

	Cond. Temp.	Evaporating temperature									
		-25	-20	-15	-10	-5	0	5	7	10	12.5
Power Input kW	10	4.16	4.32	4.38	4.34	4.17					
	15	4.49	4.73	4.88	4.93	4.86	4.67				
	20	4.79	5.1	5.34	5.49	5.52	5.44	5.22	5.1		
	25	5.05	5.44	5.77	6.01	6.15	6.18	6.09	6.01	5.85	5.68
	30	5.27	5.75	6.17	6.51	6.76	6.9	6.93	6.91	6.83	6.72
	35	5.46	6.02	6.53	6.97	7.33	7.59	7.75	7.78	7.78	7.75
	40	5.62	6.27	6.87	7.41	7.88	8.27	8.55	8.63	8.72	8.76
	45		6.48	7.18	7.83	8.41	8.92	9.33	9.47	9.64	9.75
	50		6.67	7.47	8.22	8.92	9.55	10.1	10.29	10.5	10.7
	55			7.73	8.59	9.41	10.17	10.85	11.09	11.4	11.7
	60			7.97	8.95	9.88	10.77	11.58	11.89	12.3	12.7
	62				9.08	10.07	11	11.87	12.2	12.7	13

## 7.3 D9RS 1500 vs D3SS 1500

### R22 - D9RS1500

Capacity kW	Cond. Temp.	Evaporating temperature									
		-25	-20	-15	-10	-5	0	5	7	10	12.5
30	12.54	16.7	21.52	27.08	33.48	40.81	49.17	52.83	58.7	63.9	
35	11.28	15.28	19.93	25.29	31.45	38.51	46.56	50.09	55.7	60.8	
40	10.03	13.87	18.33	23.48	29.4	36.18	43.92	47.31	52.7	57.6	
45		12.46	16.73	21.67	27.34	33.84	41.26	44.5	49.7	54.3	
50		11.08	15.15	19.86	25.28	31.49	38.58	41.68	46.6	51.1	
55			13.59	18.06	23.22	29.13	35.88	38.84	43.6	47.8	
60			12.06	16.29	21.17	26.78	33.18	35.98	40.5	44.5	
62				15.59	20.36	25.84	32.1	34.84	39.2	43.2	

Power Input kW	Cond. Temp.	Evaporating temperature									
		-25	-20	-15	-10	-5	0	5	7	10	12.5
30	5.61	6.41	7.14	7.78	8.32	8.73	8.98	9.04	9.06	9.02	
35	5.74	6.65	7.51	8.28	8.97	9.53	9.96	10.09	10.2	10.3	
40	5.81	6.84	7.82	8.74	9.57	10.29	10.89	11.09	11.3	11.5	
45		6.98	8.09	9.14	10.12	11	11.77	12.04	12.4	12.7	
50		7.07	8.31	9.49	10.62	11.65	12.59	12.93	13.4	13.8	
55			8.48	9.8	11.06	12.26	13.36	13.78	14.4	14.8	
60			8.59	10.05	11.46	12.81	14.08	14.57	15.3	15.8	
62				10.14	11.61	13.02	14.36	14.87	15.6	16.2	

### R22 - D3SS 1500

Capacity kW	Cond. Temp.	Evaporating temperature									
		-25	-20	-15	-10	-5	0	5	7	10	12.5
10	19.36	24.28	30.13	37	44.99						
15	18.04	22.74	28.34	34.91	42.55	51.34					
20	16.77	21.26	26.59	32.87	40.17	48.58	58.19	62.39			
25	15.56	19.82	24.9	30.88	37.84	45.88	55.06	59.08	65.5	71.2	
30	14.39	18.45	23.27	28.95	35.57	43.22	51.99	55.82	62	67.4	
35	13.28	17.12	21.69	27.07	33.36	40.63	48.97	52.62	58.5	63.7	
40	12.23	15.85	20.16	25.25	31.19	38.08	46	49.48	55	60	
45		14.64	18.69	23.48	29.09	35.6	43.1	46.39	51.7	56.4	
50		13.48	17.28	21.77	27.04	33.17	40.25	43.37	48.4	52.8	
55			15.93	20.12	25.05	30.8	37.46	40.4	45.1	49.3	
60			14.63	18.53	23.12	28.49	34.73	37.49	41.9	45.9	
62				17.91	22.37	27.59	33.66	36.34	40.7	44.5	

Power Input kW	Cond. Temp.	Evaporating temperature									
		-25	-20	-15	-10	-5	0	5	7	10	12.5
10	5.91	6.21	6.4	6.47	6.39						
15	6.39	6.79	7.1	7.28	7.34	7.24					
20	6.78	7.28	7.7	8.01	8.2	8.26	8.15	8.06			
25	7.1	7.7	8.22	8.66	8.99	9.2	9.25	9.23	9.15	9.03	
30	7.35	8.05	8.69	9.26	9.72	10.08	10.3	10.35	10.4	10.3	
35	7.56	8.36	9.11	9.8	10.41	10.92	11.3	11.42	11.6	11.6	
40	7.74	8.64	9.5	10.32	11.06	11.72	12.28	12.46	12.7	12.9	
45		8.89	9.87	10.82	11.7	12.51	13.23	13.49	13.8	14.1	
50		9.15	10.24	11.31	12.34	13.3	14.19	14.52	15	15.3	
55			10.62	11.82	12.99	14.11	15.16	15.55	16.1	16.6	
60			11.03	12.36	13.66	14.94	16.15	16.62	17.3	17.8	
62				12.58	13.94	15.28	16.56	17.06	17.8	18.4	

Benelux  
Deltakade 7  
5928 PX Venlo  
Tel. +31 77 324 02 34  
Fax +31 77 324 02 35  
benelux.sales@emerson.com

Germany, Austria & Switzerland  
Senefelder Str. 3  
63477 Maintal  
Tel. +49 6109 605 90  
Fax +49 6109 60 59 40  
ECTGermany.sales@emerson.com

France, Greece & Maghreb  
8, Allée du Moulin Berger  
69130 Ecully Cédex  
Tel. +33 4 78 66 85 70  
Fax +33 4 78 66 85 71  
mediterranean.sales@emerson.com

Italy  
Via Ramazzotti, 26  
21047 Saronno (VA)  
Tel. +39 02 96 17 81  
Fax +39 02 96 17 88 88  
italy.sales@emerson.com

Spain & Portugal  
Diputació, 238 AT-8  
08007 Barcelona  
Tel. +34 93 412 37 52  
Fax +34 93 412 42 15  
iberica.sales@emerson.com

UK & Ireland  
Unit 17, Theale Lakes Business Park  
Reading, Berks RG7 4GB  
Tel: +44 1189 83 80 00  
Fax: +44 1189 83 80 01  
uk.sales@emerson.com

Sweden, Denmark, Norway & Finland  
Pascalstr. 65  
52076 Aachen  
Tel. +49 2408 92 91 27  
Fax +49 2408 92 95 28  
nordic.sales@emerson.com

Eastern Europe, Turkey & Iran  
Pascalstr. 65  
52076 Aachen  
Tel. +49 2408 929 0  
Fax +49 2408 929 525  
easterneurope.sales@emerson.com

Poland  
ul. Konstruktorska 11A  
02-673 Warszawa  
Tel. +48 22 458 92 05  
Fax +48 22 458 92 55  
poland.sales@emerson.com

Russia & CIS  
Letnikovskaya Str. 10, Bldg. 2, 5th floor  
115114 Moscow  
Tel. +7 495 981 98 11  
Fax +7 495 981 98 16  
ECT.Holod@emerson.com

Balkan  
Selska cesta 93  
10 000 Zagreb  
Tel. +385 1 560 38 75  
Fax +385 1 560 38 79  
balkan.sales@emerson.com

Asia & Pacific  
10/F, Pioneer Building, 213 Wai Yip Street,  
Kwun Tong, Kowloon - Hong Kong  
Tel. +852 28 66 31 08  
Fax +852 25 20 62 27  
asiapacific.sales@emerson.com

Latin America  
7975 North West 154th Street - Suite 300  
Miami Lakes, FL, 33016 - USA  
Tel. +1 305 818 88 80  
Fax +1 305 818 88 88  
latinamerica.sales@emerson.com

Middle East & Africa  
PO Box 26382  
Jebel Ali Free Zone - South, Dubai - UAE  
Tel. +971 4 811 81 00  
Fax +971 4 886 54 65  
mea.sales@emerson.com

**Copeland**  
brand products

Emerson Climate Technologies GmbH - European Headquarters - Pascalstrasse 65 - 52076 Aachen, Germany  
Tel. +49 2408 92 90 - Fax: +49 2408 92 95 70 - www.emersonclimate.eu

The Emerson Climate Technologies logo is a trademark and service mark of Emerson Electric Co. Emerson Climate Technologies Inc. is a subsidiary of Emerson Electric Co. Copeland is a registered trademark and Copeland Scroll is a trademark of Emerson Climate Technologies Inc.. All other trademarks are property of their respective owners. Information contained in this brochure is subject to change without notification.

© 2008 Emerson Climate Technologies, Inc.

  
**EMERSON**  
Climate Technologies

EMERSON. CONSIDER IT SOLVED.