



Refrigerant



Inverter



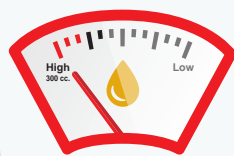
Scroll



# ADB

## R-404A Inverter Scroll Compressor with Sight glass

SCI would like to introduce inverter scroll compressor for R-404A refrigerant for medium temp. refrigeration application. It comes with the sight glass feature. With this feature, we can see the allowable minimum oil amount at 300 cc and also behavior of oil in each condition.



Monitor  
minimum oil

At 300 cc.



Monitor  
behavior of oil

Detect by color of oil

## ■ SCI Inverter Scroll Compressor with Sight glass Line-up

Refrigerant	Compressor Model	Cooling Capacity	[kW]	0	2	4	6	8	10	12	14	16	18	20
			[KBTU/Hr.]	0	7	14	26	27	34	41	48	55	61	68
R-404A	ANB33FCAMTS													
	ANB42FCAMTS													
	ANB66FDAMTS													
	ANB78FDAMTS													
	ANB87FDAMTS			Under Developing										

Testing condition : ET = -10°C, CT = 50°C  
R-410A models are in developing process

Inverter

## ■ Specifications of R-404A Inverter Scroll Compressor with Sight glass

Models	Capacity Range			Performance at 60 rpm						Weight (kgs.)	Oil (cc.)
	(min ~ max)			Capacity		Input		COP	EER		
	Watt	Kcal/Hr.	BTU/Hr.	W	BTU/Hr.	Watt	Amps	(w/w)	(BTU/Hr.*w)		

### b) DC Inverter 400 Volt

ADB33FCAMTS (15-120RPS)	833~5,000	716~4,299	2,843~17,060	2,500	8,530	2,090	7.50	1.2	4.08	33.2	1,900
ADB42FCAMTS (15-120RPS)	1,128~10,247	970~8,811	3,849~34,964	5,200	17,743	2,550	9.10	2.04	6.96	33.1	1,900
ADB66FDAMTS (15-120RPS)	1,853~16,532	1,593~14,214	6,323~56,409	8,500	29,002	4,100	13.30	2.07	7.07	38.9	1,900
ADB78FDAMTS (15-120RPS)	2,371~19,467	2,039~16,739	8,090~66,424	9,800	33,438	4,700	15.20	20.9	7.11	38.9	1,900

Notes: 1. Testing Condition : Medium Temp. Condition

2. For variety of oil quantity, please contact sales representative, Min - Max oil quantity is between 900-2300 cc.

## ■ Outline Drawing

